

UNISTRUT®

marco
cablemanagement



PREFABRICATED & MODULAR SOLUTIONS

**UNISTRUT® Prefabricated & Modular Framing Solutions & Services.
Marco Prefabricated uPVC Trunking Units.**

The complete bespoke solution from Unistrut & Marco.

Product Guide

RACEWAY. YOUR WAY.™

A PART OF **atkore**
INTERNATIONAL



Carl Jones
President
International Raceway

“Unistrut has placed its products and services at the forefront of the growing modular construction market.”

“The UK construction industry continues to explore new improved ways of working and modern methods of construction that will speed up, enhance and reduce the cost of the build process. As a business we see modular construction playing an increasingly important role, so much so that we have invested in a new site to solely focus on modular fabrication alone, with Unistrut being the first manufacturer in the UK to do so. Our varied range of electrical raceway products and solutions are used to create bespoke service units that simply slot into a building, offering a perfect fit for a structure designed under modular principles.”



Unistrut: More than you imagine

Unistrut has been the leading supplier of metal framing systems for over 90 years. We specialise in channel framing, cable management and prefabricated framing, and our products and services are synonymous with engineering excellence and reliability worldwide.

Over ninety years of innovation

Unistrut began developing and manufacturing products during the 1920s, producing the original Unistrut metal framing system. Our extensive product portfolio now includes a variety of cable management solutions and advanced metal framing systems.

Sharing our experience, knowledge and expertise

We continue to make investments in our people, products and services. Our ability to share our experience and knowledge with our customers is the key to our success in a wide range of industry sectors.

Part of the Atkore International family

Atkore is a major manufacturer and innovator with a unique focus on steel frame, pipe and electrical products. As part of the Atkore family we can draw on a variety of technologies, products and experience from Atkore companies throughout the world.

90

YEARS OF
INNOVATION



THE UK'S NUMBER 1 CABLE MANAGEMENT MANUFACTURER

UNISTRUT®

PREFABRICATED & MODULAR SYSTEMS

Unistrut is able to offer a wide range of expertise and services to supply custom solutions to suit the needs of any project.

The complete bespoke solution from Unistrut

We understand the challenges that modern infrastructure projects create. It's often the case that an off-the-shelf solution is unable to answer all of your needs and requirements – especially when there are specific location, timing, or environmental issues to consider.

In these situations, a bespoke solution can offer you the durability and flexibility you need to successfully deliver your project.

Our prefabricated service specialises in solving complex framing issues. Our ability to assess, design, build and support bespoke systems has proven to be invaluable on a variety of major projects.

Working with a wide range of industries

Our products help to support the infrastructure that is vital to modern industry and commerce. The Unistrut product range can be seen in over 50 industry sectors where expertise and reliability are vital to success.

Our team of framing experts design and deliver projects that keep industry functioning – from the petrochemical sector to transportation, from the oil and gas industry through to the latest developments in high-tech data-centres.



Oil and gas



Rail



Petrochemical



Aviation



Data centres



Nuclear

TRAPEZE FRAMES

Multi-Service support for mechanical, electrical and ventilation

Fully Specified

Each threaded rod unit can be supplied to the clients specific requirements, ensuring that every job is met with accurate and ready to install modules. Specific dimensions on the size of channel used and the diameter of the threaded rod can be specified to Unistrut upon enquiry.

Multiple Tiers

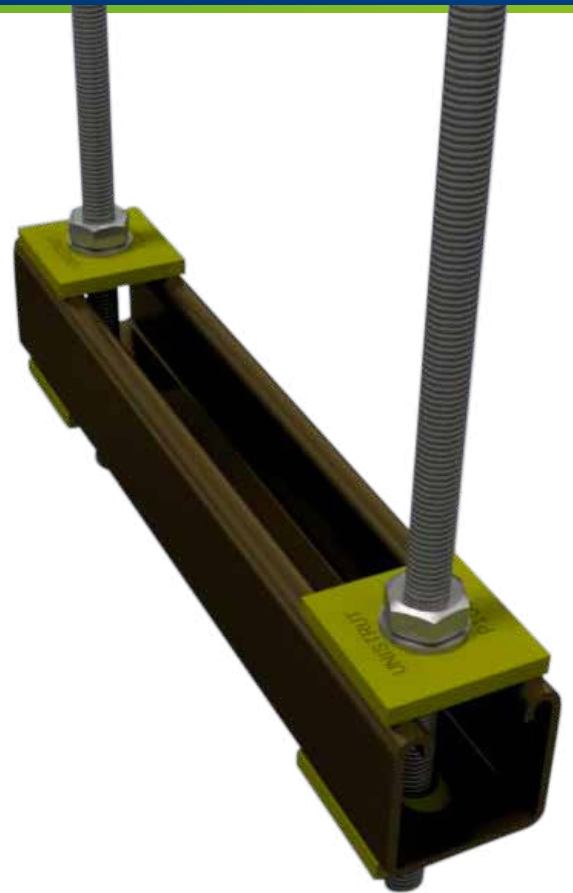
Each unit can be supplied as a single, or multi-tiered set, to allow for changing of configurations on-site.

Best Practice

Each trapeze frame is manufactured to Unistrut's best practice, which includes our square plate and flat washers. Unistrut ensure each unit is manufactured to comply with all applicable standards.

Application Specific

Each trapeze unit is designed to specific customer requirements, with application driven load calculations done beforehand to ensure each unit can support all on-site requirements.



H-FRAMES

Multi-Service brackets manufactured from Unistrut, available as welded or bolted systems

Unistrut's H-Frames can be supplied in two system configurations to allow for flexibility when ordering the product.

H-Frames are available as follows:

Bolted System

Unistrut's bolted system is supplied with all accessories pre-installed to the unit using nut and bolt configurations. This solution is ideal for projects where the installer may need to make small adjustments based on site requirements.

Welded System

Unistrut's welded H-frames are designed for rigidity and sustained product life. Each welded unit is supplied complete and cannot be adjusted to suit on-site requirements, as all design requirements are signed off before manufacture.



Bespoke modular units, delivered complete & ready to install

Unistrut's kit assemblies are designed for installation on projects where multiple, repeating specifications are required, and are supplied complete, ensuring each order arrives with the exact number of components and accessories.

Benefits of kit modules include reduced waste on site, reduced time spent cutting and assembling framing, and ensuring that exact quantities are delivered each time.

Reduced time on-site

By ordering Unistrut kit modules, you can be sure each unit arrives on site, ready to install.

Reduced waste

Each unit is supplied pre-cut to exact lengths requested, ensuring no excess waste is produced on-site.

Exact quantities

Each module is delivered complete with all accessories and fittings required. This ensures no excess waste is created during installation.



Each module supplied with a single bill of materials, and handled as a single order

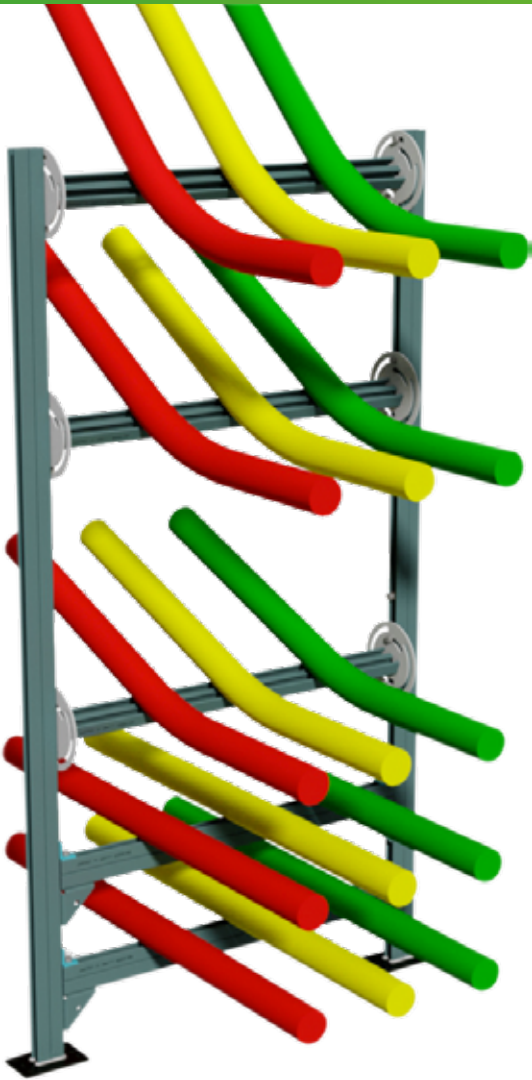
When kit assemblies are ordered, each is processed as a single unit, with a bill of materials being delivered to the customer for approval.

Unistrut then manage the entire process, ensuring that each kit is supplied as one single unit, rather than one order for multiple parts.

Example bill of materials for Unistrut Kit Assembly.
Unit would be ordered with a unique code, for example **WS1011481**

Bill of materials			
Item	Qty	Part Number	Description
1	2	P1000X1000	Plain Channel PG
2	1	P1000X2000	Plain Channel PG
3	1	P1000X1250	Plain Channel PG
4	2	P1000X2500	Plain Channel PG
5	2	P1000X600	Plain Channel PG
6	4	P2223	Double Corner Bracket
7	33	PNP12A	M12 Channel Nut
8	33	933312X30	Hex-Head Bolt
9	33	125M12	Washer
Order Code			WS1011481

2D MODULES



2D Modules to support multiple services supplying mechanical and electrical services

Similar to our H-Frames, Unistrut 2D modules are designed, manufactured and delivered to site ready to install. Utilised in housing a large amount of containment and infrastructure, including ventilation and air conditioning units, Unistrut's 2D modules can be installed vertically and horizontally.

Vertical units can be utilised to carry service risers through high-rise builds. 2D modules are also available as bolted or welded units.

Delivered complete

Each 2D module is delivered complete, ready to install and ready to house a wide variety of services.

Quality Manufacturing

Unistrut's 2D modules are manufactured to Unistrut's strict quality requirements, with each module tested to meet the load specification from the client.

Support

Unistrut's 2D modules are designed to carry a wide range of mechanical and electrical services and support pipework, also known as 'skids'.

Bolted or Welded Assembly

Unistrut's 2D modules are available as bolted or welded units, allowing for enhanced rigidity, or design flexibility as required.

Risers

Our 2D modules are designed to carry service risers throughout high-rise builds.



Unpopulated 3D modules, designed as extensions of the 2D model, manufactured to house a wide range of electrical and mechanical services

Unistrut 3D modules are designed to house a complex series of electrical and mechanical infrastructure.

Unistrut's modular service ensures each unit is manufactured to the customers' specific requirements, and clear guidance and technical support, as well as regular updates provided throughout the manufacturing process.

Bolted or Welded Assemblies

Unistrut 3D modules can be delivered as bolted or welded units. Bolted units give the client the flexibility to alter units to suit on-site requirements, whilst welded units provide a stronger, more rigid base to house services.

Scope of work

Unistrut are able to manufacture a wide scope of 3D modules, whether the client requires a one-off design solution, or hundreds of modules. No project is the same, and Unistrut are able to offer a wide variety of flexible solutions to suit the clients' needs.



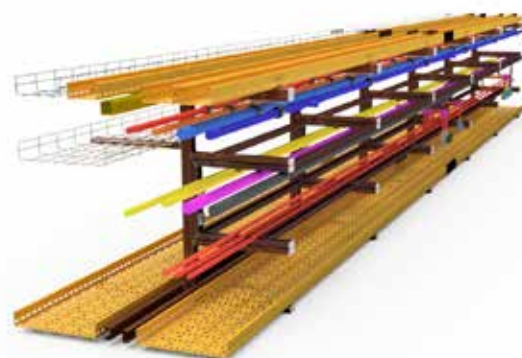
Ready to install

Unistrut 3D modules are assembled in-house at our specialist facility and delivered to site, complete and ready to install.



Flexible design service

Unistrut offer a complete design assistance service, ensuring each module is drawn and signed off before manufacture.



POPULATED MODULES

Fully populated modules with mechanical and electrical services installed.

Unistrut are also able to populate our 2D and 3D modules with a number of services from our range of electrical raceway products.

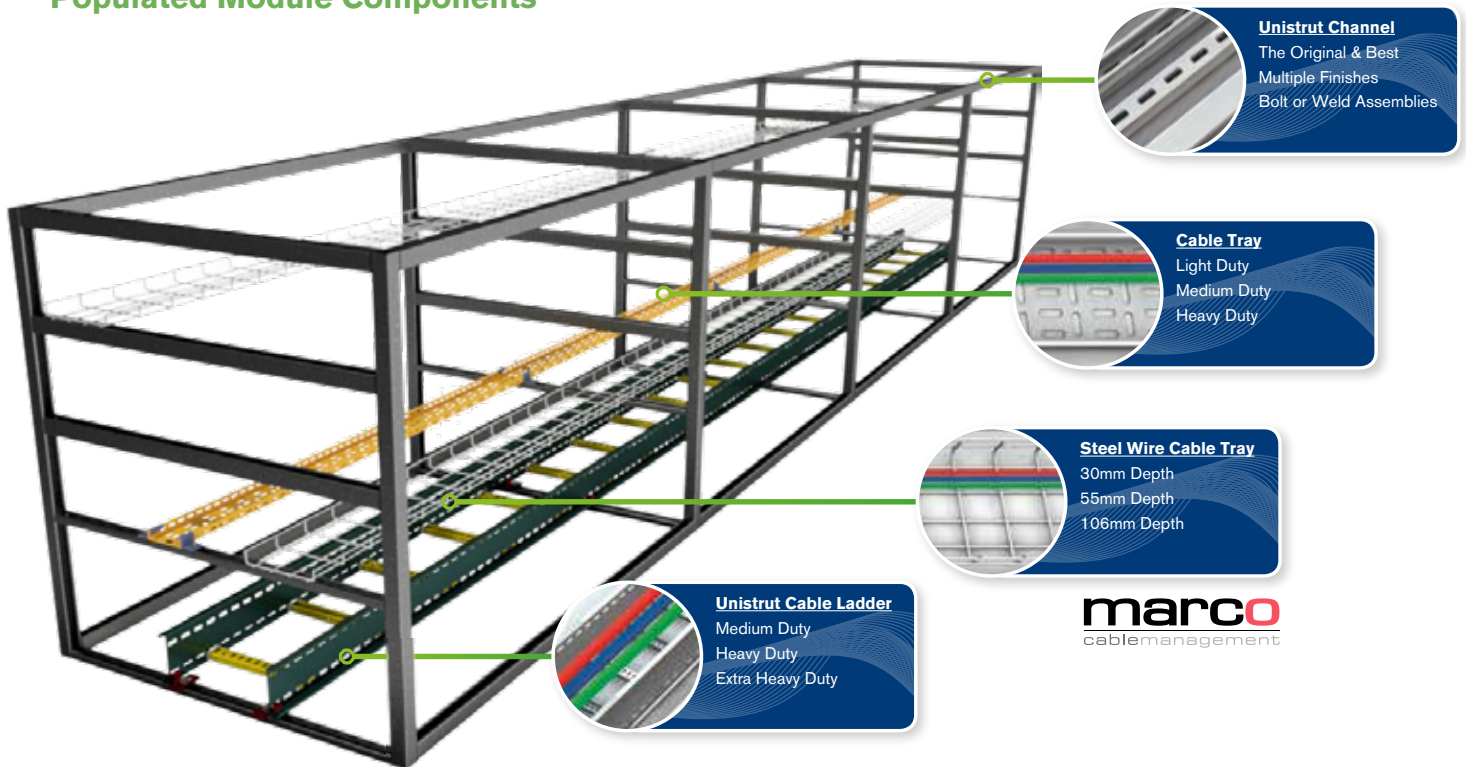
This includes our cable ladder, cable tray, cable trunking and Marco wire basket tray.

These products are all installed in the modules before shipping and secured in place using a range of Unistrut fittings and accessories.

Unistrut's ability to offer fully serviced M&E modules allows us to take on a wider variety of projects, giving our modular framing systems a wider application reach.

Quality assurance is integral to the manufacture of each module, with each being thoroughly checked prior to delivery, ensuring each unit is fully compliant with relevant standards and specifications.

Populated Module Components



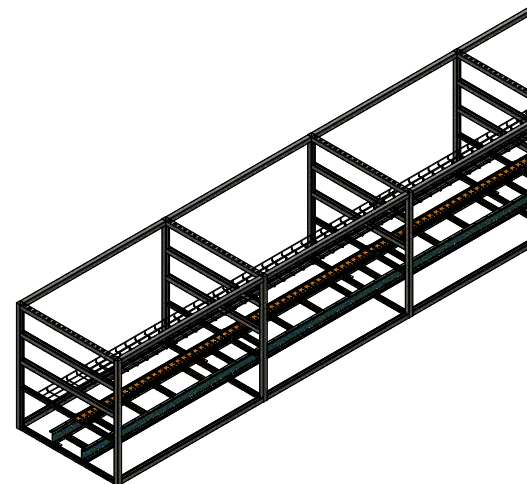
TECHNICAL CAPABILITIES & ENGINEERING SUPPORT

Working with clients to ensure each module is supplied in line with project timetables

Unistrut are able to offer a series of technical and engineering support services for all modular products.

Product delivery is key, and important to the construction of Unistrut modules.

Unistrut is committed to delivering a complete service when it comes to designing and delivering modular framing systems. Unistrut are able to support the client throughout the entire design phase.



From initial enquiry Unistrut are able to offer a tailored service to meet all the customers' needs and requirements.

With support and advice given through each step of the service to ensure the correct solutions are delivered first time.

Our service includes:

1. Consultation, by sitting down with the client and having an initial requirement discussion, Unistrut can begin looking at drawings and advise on what requirements need to be met for the project, and what can be met by Unistrut.

2. Specification, Once specification is given, Unistrut will look at the engineering and design requirements through detailed drawings sent from the client, from this an accurate bill of materials to provide costs for producing each module can be generated.

3. Drawing Delivery & Design Freeze, Unistrut will deliver drawings and get Client approval on modular units ready to go into manufacture. Here the final decision and order is placed for the units, with customer accepting design responsibility.

4. Project Delivery & Schedule, Modules are put into manufacture in-line with clients delivery schedule, to ensure each unit required for each phase of construction is delivered on time.

5. Manufacture, Unistrut will begin manufacture of each module, ensuring quality checks are performed at each key stage. Client is updated with progress on their modules and continuous communication from the engineering & sales teams.

6. Delivery, Upon completion, Unistrut will deliver completed modules to site, ready to install as per agreed schedule.



Consultation



Specification



Design

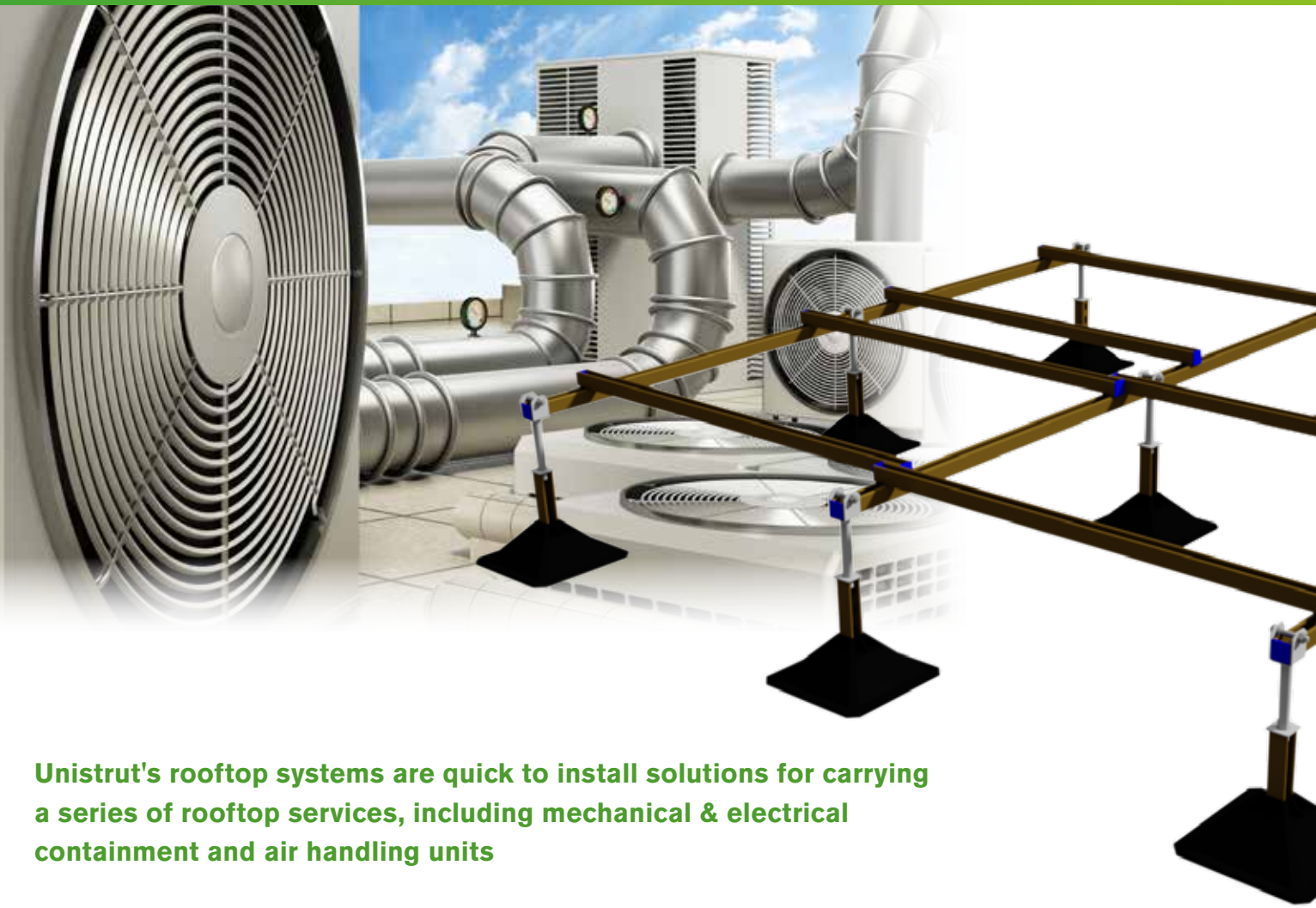


Manufacture



Support

UNIFRAME - ROOFTOP SUPPORT MODULES



Unistrut's rooftop systems are quick to install solutions for carrying a series of rooftop services, including mechanical & electrical containment and air handling units

The Unistrut range of products have been designed to offer an economical & time saving solution for mounting building services, such as pipe work, electrical containment, air conditioning & refrigeration equipment on flat roofs.

Key Features

- Available as base units & extension units
- Height adjustable from 300 to 405mm
- Fully load tested
- Designed to support all types of rooftop services, including air handling units
- Comes in kit form for easy shipping and storage
- Easy to follow assembly instructions included
- Extender frames add on to base frame offering design flexibility

For more information on our rooftop support modules, contact us today

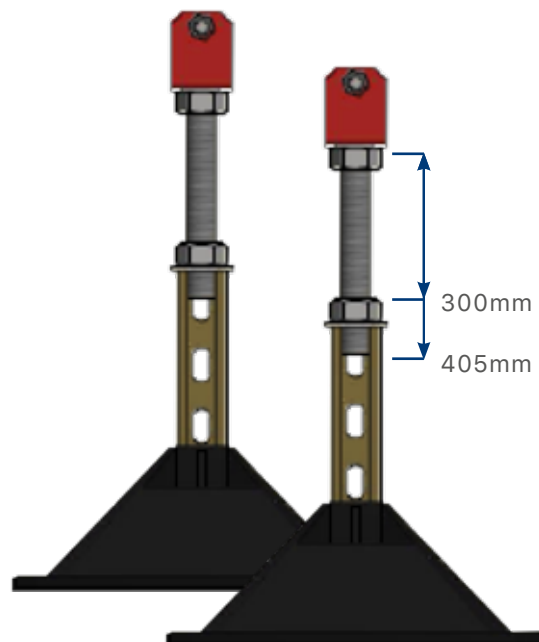
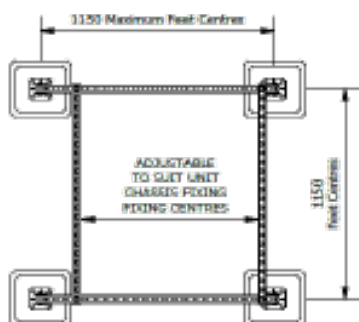
ROOFTOP CAPABILITIES AND RANGE

Key Features

Each Uniframe module has complete installation flexibility, able to accept any length of Unistrut channel, and with adjustable height legs, Uniframe is the perfect solution for all types of rooftop support projects.

Adjustable Height

Uniframe's adjustable foot pedestal allows for unit height to be increased or decreased by over 100mm to suit on site applications.



All in the box

Each component required to assemble a base or extension is supplied in the box, ready to install with all required accessories and components.

Channel you can trust

All products in the Uniframe range are assembled using Unistrut channel and supporting products, ensuring the highest quality throughout.



HD Beams

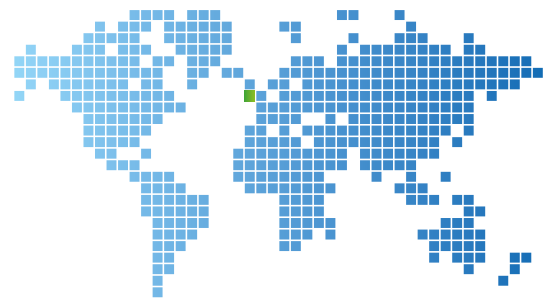
These allow load to be distributed evenly by being placed accurately, such as over existing obstacles. Each unit has adjustable height and comes complete with beam clamps.

PROJECT



Crossrail C610

Industry Sector:	Rail
Client:	Crossrail
Main Contractor:	ATC Ltd



Products used:

Unistrut modular bespoke, curved multi-arm tunnel brackets, and bespoke multi arm kit form brackets.

Challenges:

Providing 40 year design life in a C5 environment.

Solutions Results:

All products received on time and successfully installed. Solution to working with Unistrut's engineering team specialists. High silicon steel was selected to allow for a deeper galvanised finish.





Rotheram Biomass

Industry Sector: Chemical

Products used:

Slotted Channel (P1000THX1500)

Fixings

Bracket (P1074)

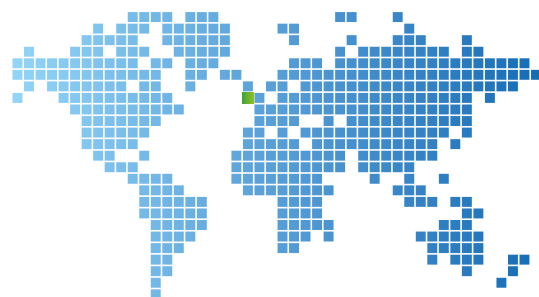
Challenges:

Working at height whilst allowing for enough time to access equipment & project timescales.

Solutions Results:

Reduction in working at height as all production taken offsite.

Reduction in manual handling and unskilled labour used for installation giving a massive cost saving. One standard bracket does all applications. Having Unistrut involved from the planning stage gave the contractor full confidence in the solution offered and gave them both a cost and time saving.



PROJECT



Standby Power Systems for Pacific Islands

Industry Sector:	New Zealand Government
Client:	Ministry of Foreign Affairs and Trade
Electrical Contractor:	Powersmart Solar



Products used:

Unistrut designed and seismically rated metal framing battery stands in kit form

Challenges:

Engineer, design, and supply 90 large battery stands in kitset form, individually packed and labelled to be shipped direct to individual islands in the Pacific region.

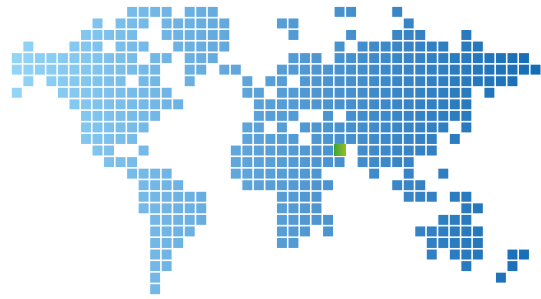
Solutions Results:

All products received on time and successfully installed on four different Pacific Islands.



Petrofac

Industry Sector:	Energy
Client:	Petrofac UAE
Main Contractor:	Major Middle Eastern EPC
Electrical Contractor:	Powersmart Solar



Products used:

Unistrut support channel, including bracketry, cantilever arms, fixings and accessories.

Challenges:

Engineering adjustable supports for horizontal & vertical members. No welding was allowed on platforms resulting in a unique solution as a replacement for traditional structural steel.

Solutions Results:

Working closely with the client to develop bespoke modular support systems, prefabricated at Unistrut's facility ready to install upon delivery.



marco

cablemanagement

PREFABRICATED UPVC TRUNKING

Our Prefabricated & Modular services have been extended to include Marco Cable Management's uPVC trunking systems, designed to carry high capacity power and data cabling in a number of installation environments.

Bespoke solutions made to measure

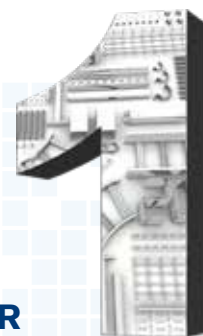
Marco's prefabricated service is designed to save the contractor time and money during on-site application of the products.

Each unit is supplied ready-made, with all required accessories and fittings installed. By supplying our units in this way, Marco can help ensure that there is less excess waste, and less time spent working with our products on site, generating a considerable time and cost saving.

Multiple applications and specifications

Marco's products are designed to suit a wide range of project applications, and as a result are able to adhere to any type of project specification. From anti-microbial protection for projects in the healthcare sector, to DDA and Part M compliance for projects in the education sector, Marco have a solution for any project requirement, and offer a wide degree of flexibility in design and service.

THE UK'S NUMBER 1 CABLE MANAGEMENT MANUFACTURER



Prefabricated uPVC trunking lengths, made to measure and ready to install.

Unistrut are now able to offer Marco's prefabricated uPVC trunking units.

Each unit is cut to length and has all accessories and fittings pre-installed ready for delivery on site.

By ordering Marco's uPVC as prefabricated units, time and money can be saved on projects with multiple repeating specifications, such as schools, hospitals and University halls of residence.

Saving Time & Money

The use of pre-fabricated uPVC units allows for faster install times on-site, produces less excess waste and allows for less time spent with each unit.

Free CAD Service

Marco are able to offer a free CAD service which allows customers to have final sign off on their units before they go in to production. Marco will also make unlimited amendments to the CAD drawings until the units are fit for purpose.

Supplied Pre-Assembled

Each unit is supplied pre-assembled, with all accessories and fittings in place. This ensures that exact quantities of accessories are delivered to site, each one installed in accordance with customer requirements.



PRE-ASSEMBLED UPVC UNITS

In an effort to expand and consolidate our service delivery, Unistrut are now able to offer Marco Cable Management bespoke trunking solutions as part of our pre-fabricated and modular services.

A wide range of uPVC trunking products are available, in a number of sizes to suit any application. Each assembly is supplied as a complete unit, and feature all of Marco's signature product benefits, including pre-punched knock-outs on the trunking base, and necessary cable segregation throughout.

Whenever possible, Unistrut is always looking for new ways to make our products and services as fast and as cost-effective as possible, and our pre-assembled uPVC units are just one time saving solution we have on offer.

For more information on the range, or for more information on the complete Marco range, contact us today.



Key Features

Education

Marco's pre-assembled trunking systems are the perfect solution for projects all the way up the education sector, from new build modular classroom's up to University halls of residence where rooms require repeat specifications.

Healthcare

Marco's pre-assembled units are also a great solution for multiple specifications within the healthcare sector, these can include multiple trunking installations across Hospital wards, to room specifications in specialist care homes.

Portable Modular Buildings

Pre-assembled uPVC units are also an ideal solution for housing power and data cables within modular buildings, allowing for flexibility in the buildings' design.

Hygieia Protection

Marco's pre-assembled units are also available with anti-microbial protection, helping defend against 99.9% of harmful bacteria. Using built-in silver ion technology, the trunking retains its anti-microbial protection for its entire lifespan.

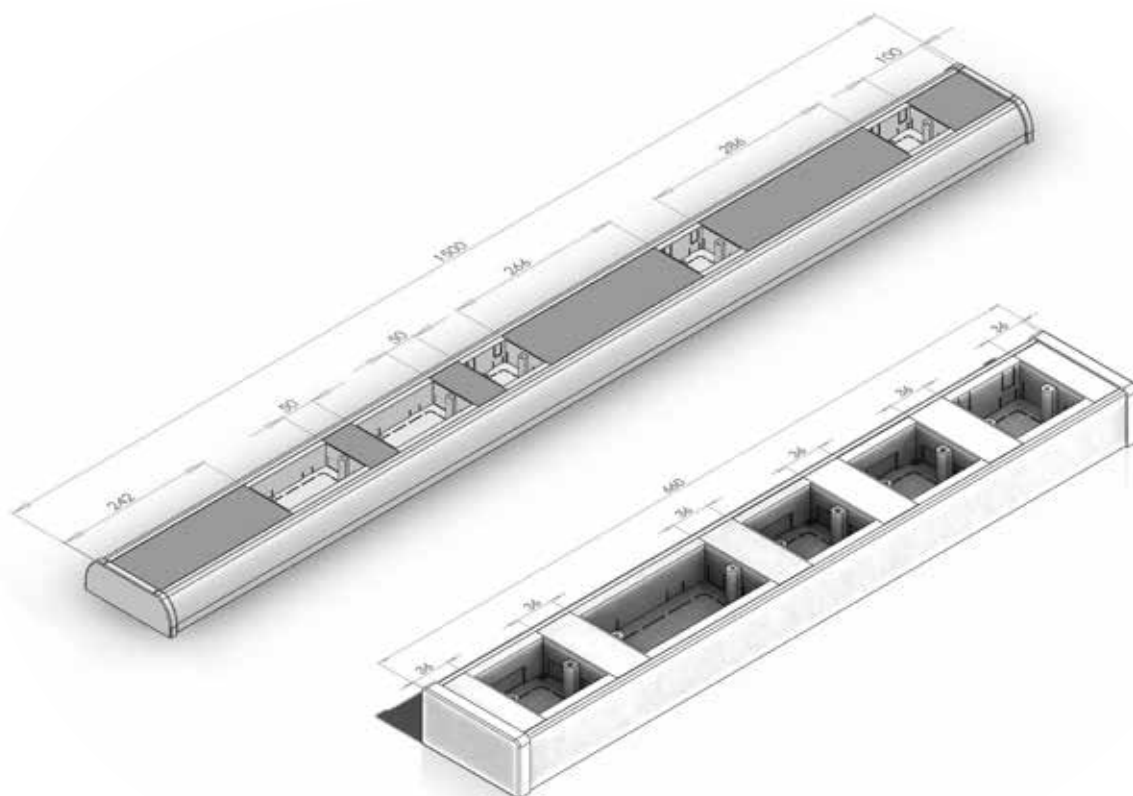
Time Saver

Our pre-assembled units are primarily designed to save time, cost and excess waste during installation on-site. Each unit is supplied complete and ready to install.

Sustainability

Pre-assembly ensures that no product ends up as excess waste on site due to each length being supplied bespoke to the exact measurements and design required.

PRE-ASSEMBLED UPVC SERVICE



What we offer:

Marco are able to offer a tailored prefabrication service to meet all the customers needs and requirements. We can support and advise through each step of the service to ensure the correct solutions are delivered first time.

Our service includes:

- 1. Initial input and advice on the enquiry**, Marco's fully trained internal and external teams are able to advise the correct uPVC trunking solution to meet the project requirements.
- 2. Free CAD service**, Marco are able to deliver a series of CAD drawings and renders, fully detailed with measurements and accessories installed.
- 3. Sample and Client approval**, Marco are able to then supply a free mock-up sample of the pre-assembled unit for client approval and sign off.
- 4. Specification and design**, Pre-assembled units can be supplied to meet Part M using a DDA compliant light grey or charcoal lid, or coloured DDA frames.
- 5. Meeting the latest structured cabling requirements**. Marco's uPVC pre-assembled units can also be supplied to meet the latest structured cabling solutions including CAT5E, CAT6 and CAT6A.
- 6. Lead time and delivery**, upon approval, Marco are able to respond with quick accurate lead times to ensure that product delivery is in line with client requirements. Product can be delivered direct to site or can be sent to an Electrical Wholesaler.

PRE-ASSEMBLED UPVC UNITS

Elite 3

175 x 60mm



ME3

A CAT6 and CAT6A trunking system designed to suit all types of installation environment. Manufactured from high impact resistant uPVC and supplied with Marco's signature white finish Elite 3 is the perfect fit for any modern installation.

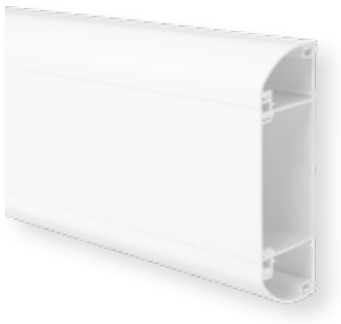
Elite 3 is available in three colours, White, Light Grey and Charcoal.

Key Features

- 3 Compartment.
- Supplied as assembled units, including base and all lids.
- Pre drilled base with pre-punched knock-outs between compartments.
- CAT6 and CAT6A Compliant.
- Available with DDA compliance.
- Available with anti-microbial protection.

Elite Compact

145 x 50mm



MEC3

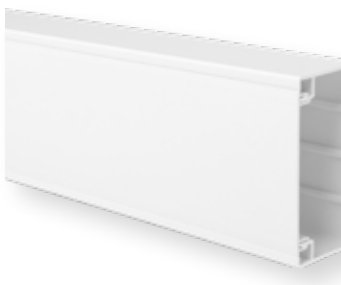
Elite Compact is also a CAT6 and CAT6A compliant system offering all the benefits of Marco's larger Elite products, packed into its smaller 145 x 50mm profile. Manufactured from the same high impact resistant uPVC compound, Elite Compact is able to house a large number of structured cabling systems, and is small enough to be ideal for installations where space is restricted.

Key Features

- 3 Compartment.
- Supplied as assembled units, including base and all lids.
- Pre drilled base with pre-punched knock-outs between compartments.
- CAT6 and CAT6A Compliant.
- Available with DDA compliance.
- Available with anti-microbial protection.

Juno

100 x 50mm



MT105

Marco's Juno is a single compartment trunking with the ability to be sub-divided up to three times, enabling it to form up to four compartments.

Juno is ideal for smaller installations where cable segregation is key. Its compact design makes it perfect for domestic and commercial use.

Key Features

- Single Compartment Trunking.
- Can be sub-divided to make up to 4 compartments.
- Available in White, Light Grey and Charcoal.
- Available with DDA compliance.
- Anti-microbial protection available.

PRE-ASSEMBLED UPVC UNITS

Apollo 3

170 x 50mm



Marco's Apollo trunking is a CAT5 and CAT5E trunking as standard and is available in three profiles including Dado, Skirting and Square.

With a 170 x 50mm profile, Marco's Apollo trunking is a popular choice for cable containment.

Key Features

- 3 Compartment.
- Supplied as assembled units, including base and all lids.
- Available in three profiles, Dado (chamfer), Skirting and Square.
- CAT5 as standard, can be made to meet CAT6 using additional data guides.
- Available with DDA compliance.

MTD3

Apollo 4

257 x 50mm



Available in three profiles Apollo 4 compartment uPVC trunking offers separate compartments for power and data cables. Apollo 4's stand-out feature is its two large centre compartments, designed to offer the maximum capacity for all types of applications. Apollo 4 compartment comprises one length of Apollo 3, plus the MT4KI extension kit.

Key Features

- 4 Compartment.
- Marco's largest capacity trunking.
- Both compartments able to house 1 and 2 gang socket boxes.
- Available in three profiles, Dado (chamfer), Skirting and Square.
- Available with DDA compliance.

MTD4

Elite 60

200 x 60mm



Elite 60 is the largest capacity trunking in the Elite range, allowing for a greater number of cables to be installed.

Elite 60 comes with a unique top-opening lid, allowing cables to be installed easily and speedily. Should additional cable segregation be required, further capacity can be achieved through the use of clip-in dividers, able to take the trunking up to 5 compartments if required.

Key Features

- 2 Main compartments with smaller compartment under top lid.
- Supplied as assembled units, including base and all lids.
- Pre drilled base.
- CAT6 and CAT6A Compliant.
- Available with DDA compliance.
- Available with anti-microbial protection.

MT60

PRODUCT RANGE

Unistrut: more than you imagine



Cable Tray

Available in both UK and European standard patterns, our cable trays come in a wide range of sizes and finishes, including a 'Quick-Splice' fast assembly variant for both installation efficiency and maximum application versatility.



Unistrut® Metal Framing

The original Unistrut metal framing offers unrivalled quality and durability and is designed to work with the full range of new Unistrut parts and accessories. Designed and created by us, our metal framing underlines our commitment to produce products you'll be proud to install.



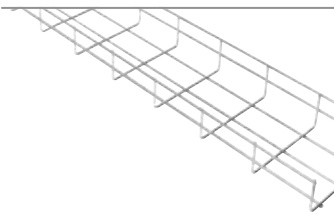
Cable Ladders

Unistrut cable ladders are the ideal solution when installing large power cables that need to be supported safely. Available in light, medium and heavy duty patterns to suit your application.



Cable Trunking

The Unistrut Cable Trunking system is designed to be quick and simple to assemble, providing real time saving as well as remaining a reliable product throughout its natural life cycle. Pre-assembled internal trunking connectors allow you to securely connect trunking lengths in seconds, giving a neat external finish.



Steel Wire Cable Tray

Marco's steel wire cable tray is manufactured from direct bright drawn mild steel. The tray is made using a 100 x 50mm mesh grid structure, and each length is produced to 3 metres. All Marco steel wire cable tray is manufactured in our state-of-the-art, custom built facility in the UK.



Marco Power & Data Perimeter Trunking

Marco's range offers an innovative design solution for the growing data cabling market. Available in standard and compact sizes, the symmetrical curved & skirting designs allow for the installation of power and high density structured cabling systems. Marco's trunking systems are available with CAT5E, CAT6, Shielded, CAT7 and the new CAT6A 10-Gig solution compliance as standard.

For more information visit

www.unistrut.com or call 0121 580 6300

UNISTRUT®

A PART OF **atkore**
INTERNATIONAL



Project C610 - Utilising UNISTRUT® Cable Management & Bracketry



Quality that keeps on going, Complete solutions from the UK's Number 1

Channel Framing. Cable Ladder. Cable Tray. uPVC Trunking. Prefabrication.

Unistrut & Marco have been supplying the UK rail industry for over a combined 100 years, with quality solutions to suit all kinds of on-site requirements. Cost effectiveness and ease of installation make sure all your rail projects are delivered on time.

For more information, contact us or visit us online at
www.unistrut.com and www.marco.com

RACEWAY. YOUR WAY.™

UNISTRUT®

marco
cablemanagement

A PART OF **atkore**
INTERNATIONAL

Unistrut Ltd.

Delta Point
Greets Green Road
West Bromwich
B70 9PL
England

Phone / +44 (0) 121 580 6300
Fax / +44 (0) 121 580 6370

www.unistrut.co.uk

Marco Cable Management

Unit 8
Bryn Cefni Industrial Park
Llangefni
LL77 7XA
Wales

Phone / +44 (0) 1248 725 772
Fax / +44 (0) 1248 725 788

www.marcocm.com



UNISTRUT®



Columbia-MBF™



UNISTRUT Construction



A PART OF **atkore**
INTERNATIONAL